

UNIVERSITY OF ALBERTA LIBRARY



0 1620 0303 9581

TN  
27  
A3  
N637  
v.6:  
no.6  
1938  
POLAR





EX LIBRIS  
UNIVERSITATIS  
ALBERTENSIS

---



# NOR' WEST MINER

EDMONTON, ALBERTA

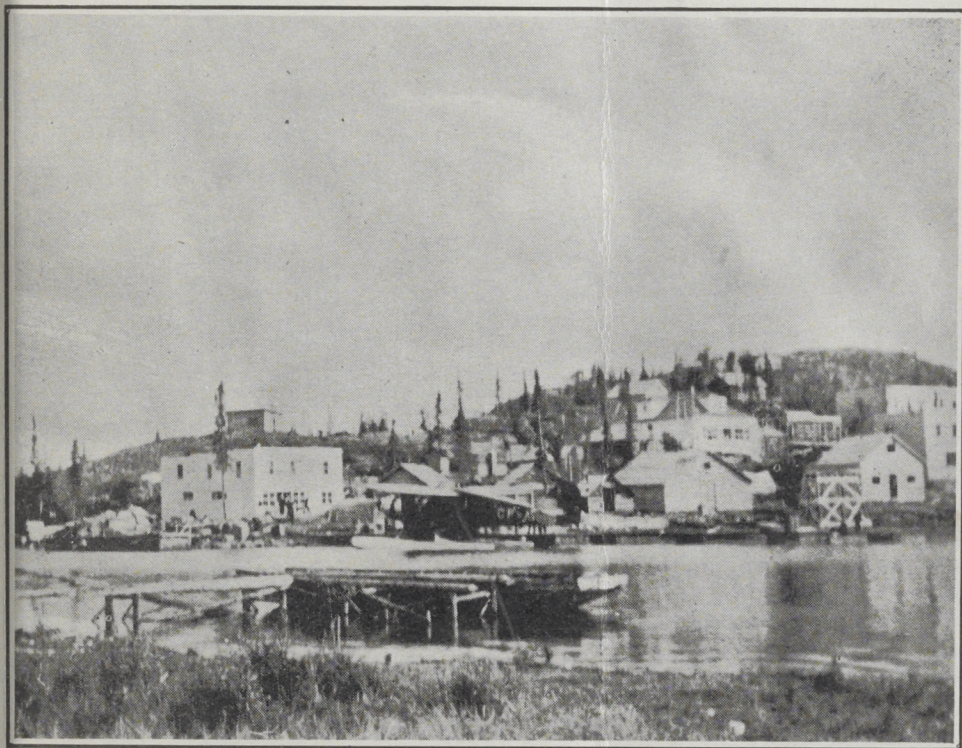
*A monthly Devoted to Northern Mining Development in the Yellowknife, Great Bear and Great Slave Lakes, Goldfields, Alberta and Northern B.C., the Tourist and Game Hunting Attraction of Alberta.*

Vol. VI.  
No. 6

AUGUST  
1938.

## YELLOWKNIFE—IN PICTURE FORM

25c A Copy



Yellowknife Business Section—a Real Live and  
Coming Mining Town.

### 30 YEARS' EXPERIENCE

in handling of foodstuffs for the far North is your assurance of—  
**QUALITY, SERVICE, and LOWEST PRICES**

Write for Complete Grocery Catalogue

# H. H. COOPER

WHOLESALE GROCERS LIMITED FRUITS and VEGETABLES  
Manufacturers and Distributors of BLUE WILLOW Quality Products.

P. O. BOX NO. 10

EDMONTON, ALBERTA

\$2.00 A Year





EX LIBRIS  
UNIVERSITATIS  
ALBERTÆNSIS

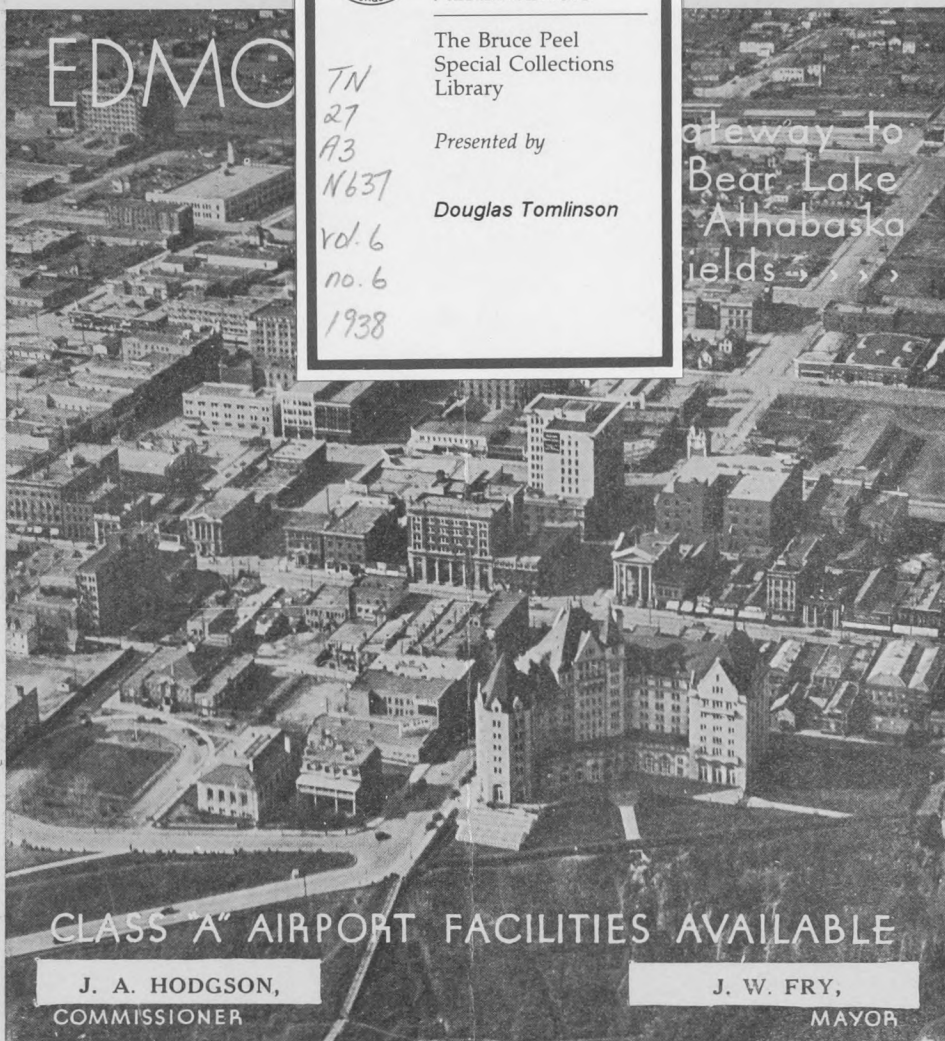
The Bruce Peel  
Special Collections  
Library

Presented by

Douglas Tomlinson

TN  
27  
A3  
N637  
Vol. 6  
no. 6  
1938

Gateway to  
Bear Lake  
Athabasca  
fields



CLASS "A" AIRPORT FACILITIES AVAILABLE

J. A. HODGSON,  
COMMISSIONER

J. W. FRY,  
MAYOR

YELLOWKNIFE GOLD IS THE LATEST DEVELOPMENT

## EDMONTON

**IS THE KEY TRADING POINT to the Mineral Areas of the North**

The Athabasca Tar Sand Area, Out Post Island, Great Slave Lake, The Yellowknife Mining Area, Gordon Lake, Great Bear Lake. and The Goldfields Area

All connected direct with Edmonton by the shortest Air, Water and Rail Routes.

Edmonton has first class Air Ports—Both for Summer and winter work  
(Wheels or floats or skis).

Edmonton has served the North for a century of trading. It knows your requirements and carries full stock to meet the same.

J. W. FRY,  
Mayor.

R. J. GIBB and J. HODGSON,  
City Commissioners.

UNIVERSITY LIBRARY  
UNIVERSITY OF ALBERTA



# THE NOR' WEST MINER

A monthly devoted to Northern Mining Development in the Yellowknife, Great Bear and Great Slave Lakes, Goldfields, Alberta and Northern B.C. Mining districts, also the tourist and big game attractions of Alberta.

Correspondence solicited from all interested. Subscription, \$2.00 a year, Post free. Advertising Rates on application. Office of Publication, 6 Richardson Block, Edmonton, Alberta, Phone 24523.



## "SAY'S THE MINER"

The Yellowknife is the busiest new mining camp in Canada. It is also the busiest airport. With hundreds of experienced prospectors combing the field, interesting strikes have already been announced and there is no doubt there will be still more announced as prospectors come in this fall.

\* \* \*

It is early yet to form any conclusions as to the permanency of the camp, although the huge investment of the Consolidated in the field, the discoveries of large bodies of low grade ore and the startling spectacular surface gold showings point to it becoming a real productive area.

\* \* \*

Looking at it from an outsider's point of view, it seems as if, until depth ore bodies are definitely proved, that good results can be obtained by the use of small five to ten-ton mills, which can be landed in the Yellowknife at very low cost. The rich veins, no doubt, would yield good returns by this process.

\* \* \*

Almost every mining company in Canada is in the field, testing properties, drilling and developing. The Consolidated has a depth of 562 feet, according to reports, and the mill started on its first month's run in August, reports also state, the result of a two-day test run has yielded excellent results.

\* \* \*

With aeroplane facilities, it is an easy matter to visit the Yellowknife, and actually view what is going on. Even the latest strikes can be reached in short time from Yellowknife with no hardship whatever.

\* \* \*

Prices in Yellowknife are absurdly high and should be brought down to a proper level, seeing that the freight rate is now only half what it was, namely \$45 a ton, instead of over \$90 a ton.

For the Latest Information on . .

INVESTMENTS IN TURNER  
VALLEY

NOW PAYING DIVIDENDS  
AT THE RATE OF  
OVER 50%

CONSULT  
**HUFF**  
**INVESTMENTS**  
LIMITED

204 Agency Building

EDMONTON — ALBERTA

## Gorman's

LIMITED  
EDMONTON  
CALGARY  
DRUMHELLER

Suppliers of Mining  
Machinery and Supplies  
Since 1906

Charles E. Garnett, Manager



## Down North With Canoe and Kicker

It was quite a relief to get back "down North" to the old stamping ground, visited in 1926 and again in 1929, to see how the mining boys were doing their stuff.

The first thing that strikes anyone is to find that depression, its talk and its other effects are non-existent in the North. Even McMurray—that land of long lost yearning and hope—had lost the depressed complex as planes were visualized roaring over the tree tops north to the Yellowknife. But there are still a few that claim the government—Social Credit—should stop the noise.

However, the North has awakened, after many centuries of dreaming legends of Sir Alexander Mackenzie, Franklin and those other heroes of the North, who certainly had a row to hoe; of listening to the stories of the Gentlemen Adventurers, travelling along the wide open water routes, steamboat in the summer months or by cariole in winter months, with good natured natives breaking the trail, careful to see that their passengers were not upset, and it was quite a relief to find that the North is at last awakened out of its Rip Van Winkle slumber of a "Skin for a skin. All the legends are fast fading as the Yellowknife and the thousands of miles adjacent are being combed by the prospector, who, unknown in those hectic days of trading, and the stacking of the musket against a pile of beaver, has now taken possession of the North.

We left Waterways, after passing the N.A.R. barrier—to Waterways, which cost more than the whole trip to Yellowknife, to the resounding clamor of mining freight headed for the Yellowknife on barge and scow; much of which, alas, would have several handlings before it reached its destination in the new mining field of the North. We floated down, with the aid of a Johnston "kicker" and a first class Peterborough canoe, along the wide stretches of the Athabasca to the lake. Nothing to disturb even the quietest slumberer occurred until we

reached the lake. There, however, sandbars were a-plenty, but even those did not worry the Peterborough and its Johnson.

Chipeweyan, another old landmark of the North, was reached, and then we took the wide open reaches of the Rocher river to the mouth of the Peace river and Fitzgerald.

At Fitzgerald, we had to portage 16 miles. It took just two hours to phone Ryan Bros. for a truck, put the canoe and outfit on board and head for the lower river. It rained, real hard northern rain, during the crossing, but Pat Ryan at Half Way took sympathy on us and said, "Stay here tonight." We stayed, had fresh milk from a wonderful herd of Jersey blooded cows and continued in the morning.

Fort Smith is the jumping off place for the northern rivers. We took the canoe off the truck, dumped it into the water, waved good-bye to the Fort Smith "habitants" and were once more away for the Yellowknife. At long last, after passing down a river which was a comfort as far as traffic collision risk was concerned, we came to the lake—Great Slave Lake—12,000 miles square of water, and sure a real lake. It had to be crossed, so we crossed it, with one eye on the weather and the other on the Johnson kicker. The Johnson never missed a beat, the weather never started a rumpus, but we had to watch it all the same, and threading the myriad islands, at last Yellowknife Bay, 40 miles across, opened up. We tripped up the Bay with a tail wind behind us and with just the faint tiny white spots of camps ahead to show us we were right, and so came to Yellowknife.

We expected a wilderness; we found a town. No depression, everyone busy, carpenters hammering night and day; storekeepers so crazy that they thought that at least 140% over Edmonton prices was a proper charge, evidently eager to make hay while the sun shone, and a real live bunch of people from east, west, south and north, a harbor full of planes, the



country full of prospectors, stampedes galore, gold talk everywhere, samples that were amazing. We wiped our eyes and said, "No, this is not the Klondike," as memories swept back to those days of '98.

For a fortnight one listened to tales of the "gold in them thar hills," and what's more to the point saw the gold, the country is lousy with surface showings, and then when the time came, we went home, not by canoe; it would have taken at least a month up-stream—but by air to Fort Vermilion and the Peace, and then from there to Edmonton by motor car—300 miles by rail, 700 miles by canoe; 450 miles by air to Peace River and 340 miles by motor car to Edmonton, and the last 340 miles were the worst of the trip.

That is the tale of a trip to the Yellowknife in 1938. We sat back and dreamed of previous trips by dog team and steamer to country still further north and said, "Prospecting is a cissy game today compared with '98. Anyone, if they can afford the transport cost, can see for themselves what the Yellowknife is; what it means and what the people are doing with it. You don't even have to change your pants."

#### **IMPERIAL AND B. A. OIL TO LOCATE AT YELLOWKNIFE**

It is stated that both the Imperial Oil Ltd. and the British American Oil Co. are preparing to locate oil depots at the Yellowknife. Such will prove a boon to the rapid development of the field, as no doubt it will materially decrease the present price of 80c a gallon for gasoline. One airman re-

marked, on hearing the news, that this will enable many private planes to enter the field, an impossibility before, owing to lack of gas caches.

#### **IS THE YELLOWKNIFE A MINING FIELD**

If one listens to some of the larger companies, the conclusion arrived at is that there is no district which presents greater possibilities, but tremendous development work will have to be done before mine possibilities are assured. However, with the development at the "Con" and the mill now running, returns from the mill for August should shortly be available and should give a good picture of mine possibilities.

\* \* \*

The extraordinary rich showings now being discovered make surface work on the same possible of immediate returns on a modified scale. Surface showings are so rich as to make high grading a possibility.

\* \* \*

Yellowknife is a growing town and needs sanitation, water supply, schools and some form of civic control. It is certain to be a permanent mining centre.

\* \* \*

Visits of officials from Ottawa forecast that Ottawa is fully aware of the necessity of meeting conditions and is prepared to take the necessary immediate steps to safeguard the health and comfort of this new pioneering community.

## **EATON'S IN EDMONTON**

Has been filling mail orders for CUSTOMERS IN THE NORTH ever since C. "Punch" Dickens landed the first aeroplane at Labine Point.

Air mail, radio or wire your order today.

**"IT PAYS TO SHOP AT EATON'S"**

**THE T. EATON CO.**  
WESTERN LIMITED



# INTERNATIONAL HARVESTER INDUSTRIAL POWER

## For Efficient and Low Cost Freight



If you want real efficiency in Crawler Tractor Power—see the International line of Industrial Power setting new standards in freight hauling efficiency.

International Harvester Trac-Tors are the most accessible Crawler Tractors built. Easy, dependable starting — finger tip control — positive action.

Power the entire job with Internationals — also Trucks — Tractors — Power Units.

**INTERNATIONAL HARVESTER  
COMPANY**  
of Canada, Ltd.

Edmonton

Alberta

## CROSSING THE PORTAGE AT SMITH

A record haul was established by Ryan Bros. over the Smith Portage this summer when 550 tons of freight was hauled across the 16-mile portage in four days.

Eight Dodge trucks, six with 3-ton capacity, and two with 5-ton, did the hauling, together with two Linn tractors with a capacity of 35 tons a day.

Ryan Bros. are nothing if not progressive. In addition to their large mining activities they have taken over a large stock ranch at St. Albert, where it is proposed to breed stock for the North. They already have a herd of pedigree Jersey stock at the base headquarters at Half Way on the portage. These supply fresh milk and cream to the camp where 35 men are employed. In addition, a cold storage plant has been installed where freshly killed meats are stored and distributed as required to customers.

The portage camp is well equipped with good buildings, including a spacious dining room and kitchen. Has a fully equipped service garage, where repairs are made not only to the Ryan transport fleet but also for private customers.

Efficiency in handling freight across the portage is an outstanding feature of the Ryan service. The road is kept in splendid shape, and freight goes over night and day as long as the warehouse at Fitzgerald remains unemptied. There is no tie-up of boats today, which 12 years ago was the case, when heavy rains damaged the road.

With reduced freight rates to the North, which of course includes the portage charge, from \$120 to \$45 a ton, mining companies are able to get freight in at a price commensurate with economical mining operation and what is more to the point, with certainty of delivery.

## Building Contractor

We build any style of buildings at Yellowknife at reasonable prices.

For estimates write or wire

**W. J. WILLIAMS**

YELLOWKNIFE

N.W.T.



## YELLOWKNIFE HAS 43 BUILDINGS

The following is a list of buildings at present erected at Yellowknife town. More are going up every week.

- 1 Boxing ring and sports centre.
- 2 Northern Exploration office.
- 3 Radio station (RCCS).
- 4 Mining Corporation warehouse.
- 5 Weaver and Devore store.
- 6 Corona Inn.
- 7 Yellowknife Quick Lunch.
- 8 Ed. McRorie's.
- 9 Sutherland's Drug Store.
- 10 E. Arsenault's jewellery.  
C. A. Perkins's law office.
- 11 Vic Ingraham, office.
- 12 Canadian Airways Ltd., Office.
- 13 Kushner's store (new location).
- 14 Yellowknife Bakery (new location).
- 15 Ed. Demelt refreshment stand.
- 16 Wildcat Cafe.
- 17 Yellowknife Hotel.
- 18 Yellowknife Drug Store.  
Canadian Bank of Commerce.
- 19 Hudson's Bay Co. store and warehouse.
- 20 M.A.S. office.
- 21 Yellowknife Supplies warehouse.
- 22 Yellowknife Supplies store.
- 23 Vicki Lepine's.
- 24 R.C.M.P. barracks.
- 25 Dr. Stanton's office.
- 27 Group of residences.
- 28 Moving Picture Theatre.
- 29 Site for mission.
- 30 Kushner's store (present location).
- 31 Vachon residence.
- 32 Site for B.A. Oil Agency.
- 33 Imperial Oil Agency.
- 34 Builders' Supplies lumber yard.
- 34 Air base (RCAF).
- 36 Ernie Butler butcher shop.
- 37 Ed. Jones store.
- 38 Peace River Airways.
- 39 Watts' Laundry.
- 40 M.A.S. dock.
- 41 C.A.L dock.
- 42 "The Prospector," (present location).
- 43 Government survey office.

## IT WILL PAY YOU TO INVESTIGATE

In view of the active development going on in the mining North, why not enquire concerning the well located properties in the Goldfields district.

## Edmonton Athabasca Gold Mines, Ltd.

709 Tegler Bldg. Ph. 21484



## Miners and Prospectors . .

LET US HANDLE YOUR CANVAS NEEDS  
YOU WILL BE COMPLETELY SATISFIED

Manufacturers and Dealers in

TENTS, TARPAULINS, SLEEPING ROBES,  
MOSQUITO BARS, PACK-SACKS, DOG-SLED  
COVERS, AEROPLANE ENGINE COVERS, etc.

Write for our Catalogue now

## NORTH WEST TENT & AWNING CO.

9921 JASPER AVENUE

EDMONTON, ALBERTA



## **IDEAL FOR THE NORTH...**

**COOLERATOR REFRIGERATION ANSWERS EVERY  
REQUIREMENT IN THE NORTH**

Coolerators can be obtained for any purpose where  
food preservation is the main issue.

**For Price List—Address**

**ARCTIC ICE COMPANY LIMITED**

**EDMONTON**

-

-

-

-

-

**- ALBERTA**

**MILLS AT SLAVE RIVER AND NAGLE CHANNEL**

**FORT RESOLUTION LUMBER CO., LTD.**

**Manufacturers of:**

**LUMBER — MILLWORK — SHINGLES**

**MINING TIMBERS A SPECIALTY — Wedges — Core Boxes — Large stocks of  
Lumber cut last winter on hand ready for prompt shipment. Avoid uncertainty  
and low water transportation problems by ordering from the North's own mills  
where quality and service are bywords.**

**Business Manager, Robert Porritt**

**Mill Manager, Allan MacDonald**

**HEAD OFFICE AT FORT RESOLUTION, N.W.T.**

## **HELLO THE NORTH!**

We now stock a large range of Wood's Sleeping Robes, Parkas  
and Clothing suitable for Northern purposes.

**Write or radio us for all your needs.**

**JOHNSTONE WALKER LIMITED**

**Edmonton's Own Store**

**Established Over 50 Years Ago.**

## **Insurance ..**

**Effectuated at Lloyds, London, England by**

**W. L. WILKIN LTD.**

**707 Tegler Building**

**Edmonton, Alberta**

**We Invite Inquiries on Your Insurance Problems**



## MARL AVERAGING 99 PER CEST

The Peace has a splendid marl deposit, states M. J. McNamara, of Peace River; it goes 99% and covers an area of two miles square and has a depth of around 30 feet. The deposit is within 30 miles of the town of Peace River. Gas for fuel purposes is available.

Mr. McNamara is an old timer in the North; he has always taken an interest in the mining and natural resources possibilities of the North and has two prospecting parties in the field at the present time. He was mainly instrumental in working up interest in Peace River regarding the possibility of winter road connection between Grimshaw, Peace River and Great Slave Lake, a project which is at the present time being seriously considered by mining companies and others interested.

## For Sale

Well located group of 26 claims in the middle of the Yellowknife mining area and within short distance of present producers. Claims are in good standing, situated in good rock formation and can be obtained at reasonable price. 90% interest only for sale. Address Box 200 Nor' West Miner, Richardson Blk., Edmonton.

## REAL SERVICE

He was a postmaster in the North. It was winter time, the air mail plane always threw out his mail as it passed over the settlement sometimes it landed a few hundred yards away from the post office, and this, the p.m. thought, should be corrected. So he complained. The next time, the pilot landed the mail like a bomb, made a direct hit on the post office roof with the bag, which went through the roof and landed on the postmaster. How's that for real service.

## NOTE

All rights in connection with the reproduction of illustrations in this issue are reserved and must not be reprinted without permission from the publishers.



## Waterproof Watches

Specially Built for the North  
From \$19.75 to \$50.00

Write, wire or "Holler"

If we haven't what you want  
we will get it for you.

**IRVING & LACEY  
Limited**

10329 Jasper Ave. Edmonton

## DON'T RISK THEFT!

OF YOUR

**STOCKS, BONDS OR VALUABLES**

When They Can Be Safe in One of Our

**SAFETY DEPOSIT BOXES**

**ACCESSIBLE 8 HOURS A DAY**

From 9 a.m. to 5 p.m. Saturday, 9 a.m. to 1 p.m.

INQUIRIES INVITED

**The Canada Permanent Trust Company**

10126-100th Street.

H. L. SPANKIE, Manager.



## **DISCOVERIES EVERY DAY**

Almost every day new discoveries are being made in the Yellowknife field, some of which are reported to have fabulous surface gold showings. No miner or prospector, however, is going crazy over such, for he knows that surface showings, whilst good indications, do not always make mines.

Francois River, perhaps, is the most outstanding, for here it is stated there is a huge deposit of basemetal ores, which are always preferred by the larger mining companies. The Consolidated has staked 84 claims in this area.

Russell Lake is another find which, it is stated, has good surface showings.

The Beaulieu River also claims good discoveries. Pensive Lake, Sparrow Lake and Hidden Lake have outstanding gold surface showings, with the Dome people drilling on Hidden Lake.

Sunset Lake, the latest find, is also stated to be very interesting.

These finds, forerunners without a doubt, of many more, are important for the reason they show that the gold indications are scattered over a large area and not confined to any one locality. As one mining engineer stated to the writer: "There was never a country with better surface showings than the Yellowknife, but a tremendous amount of work will have to be done to prove depth and mine value from the large operator's point of view."

One of the most outstanding discoveries made is reported to be that of Thompson, Lundmark and Mosher on Sunset Lake. Ore samples brought out from that find are of extraordinary richness. The strike at Sparrow Lake, which is also in that vicinity, is another one by the same prospectors. In addition Hidden Lake and Pensive Lake are also reported. These are all in the same locality and evidently go to show that a new gold area is about to be opened up. Dome Mines are drilling on Hidden Lake. One sample from Sparrow Lake, which was purchased for \$40 by an Edmonton man, is spectacular as to gold content.

## **FIRST TO STAKE ON HIDDEN LAKE**

The latest strike in the Yellowknife is at Sparrow Lake which is near Pensive and Hidden Lake. In fact, all three lakes are well within the newly discovered area, which has caused every man and plane in Yellowknife to drop everything and stake.

Reports coming out state that this find is outstanding even in a country where so many gold showings occur. Ed. McQueen staked 18 claims on this formation in May, 1937, and has held them in good standing ever since. Neighbors of his are the Dome Mining Co., which is conducting an intensive drilling program in the area. McQueen has 18 years experience in the North, many years of which has been devoted to prospecting. He had full opportunity to select his ground and whilst assays from grab samples ran as high, in one case, as \$3,855 to the ton, of course simply surface showings, work done on the property has given assays of \$9.00 a ton and considerable silver values. He states veins on the property, six already prospected, run from 20 inches to six feet six inches. No. 5 vein, the most promising, is four feet six inches.

His No. 1 vein has been traced for 35 ft. where both ends disappear into the water. He also states he has obtained free gold on the property.

Ed. is a prospector and he realizes that it is not the prospector's business to develop a mine. Capital is required for that, and he would like to get in touch with people capable of developing the property. His address is Yellowknife, N.W.T.

## **GRIMSHAW AGITATION BRINGS DOWN FREIGHT RATES**

The most pleasing result of the agitation for winter road communication with the Yellowknife from Grimshaw, Alta., to Yellowknife and other northern points, is the fact that it has resulted in a 50% cut in northern freight rates. Yellowknife should insist that this reduction be passed on to the consumer.

# NOR' WEST MINER

## *Down North to the Yellowknife by Canoe*

*A Picture Story of a Trip to the Yellowknife with a  
Peterboro Canoe and a Johnson "Kicker"*



### AS LAKE ATHABASCA WAS CROSSED

Twelve miles of open water  
—many miles of sand bar  
shoals, the Radio Station at  
Chipewyan appears in the  
distance.

### CROSSING SLAVE LAKE IS A REAL JOB

enty of water at all times,  
the canoe was good and  
Johnson never missed a  
at".



---

*This insert of 16 pages has been reproduced by the Photographic Process  
Designed and Illustrated by The Hamly Press Ltd., Edmonton, Alberta*



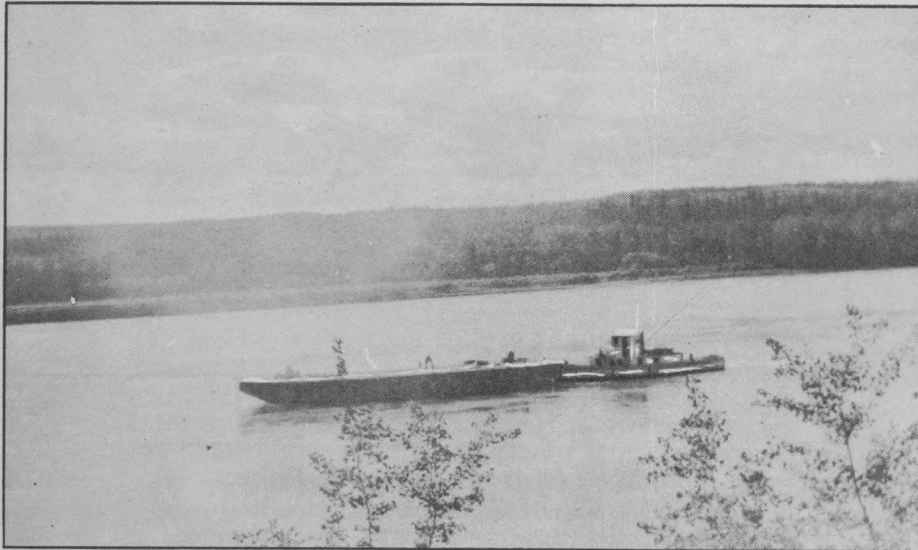
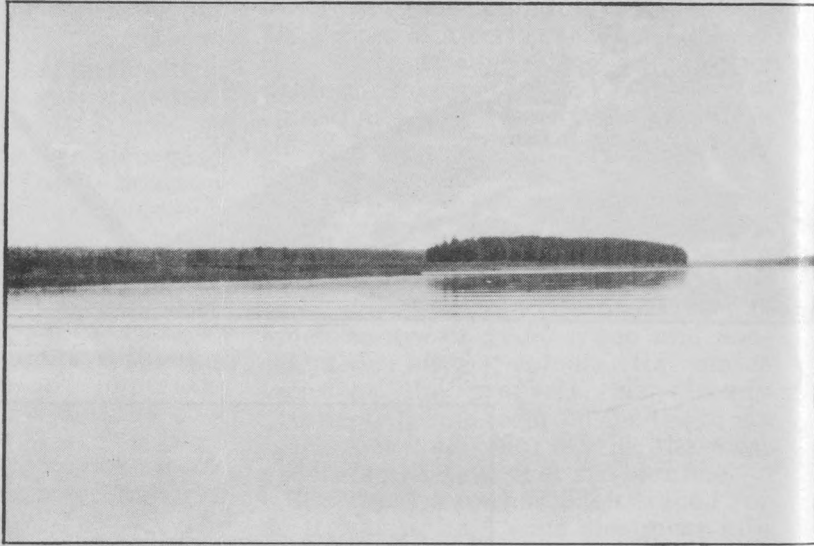


# MEETING OF RIVER TRAFFIC

On the narrow reaches  
the Athabasca.

## THE MIGHTY SLAVE RIVER •

Dotted with picturesque  
Islands.



## MORE FREIGHT FOR YELLOWKNIFE RIVER

McCALLUMS SAWMILL  
at  
EMBARASS RIVER  
80 Miles from Waterways  
( The House)  
Lady is Mrs. McCallum



THE MILL  
Established 1928—cuts  
1,000,000 feet a year.  
All shipped to Northern  
mines.

#### LOG ROLLING

Elzer Zest showing much  
zest as he rolls his young  
opponents into the water.







# NEW SAWMILL AT J RIVER

Started in July and run  
on a 50,000 foot cut  
August for Consolidat  
THE ST



MACHINERY IN PLACE



## CUTTING

First lumber will be used  
roof in plant.

# THE SMITH PORTAGE

Ryan's trucks help over the portage.



# A REFRIGERATOR DE LUXE

Cares for fresh meat at Ryan's Halfway Camp. It used to be a cold storage truck.



# THE THREE YELLOW-NIFE "MUSKETEERS"

Jock McMeekin,  
Pete Davidson,  
Fred Connell.







THIS SHACK AT YELLOW  
KNIFE

Home of Charlie Layach, a  
known old-timer. Completed  
1st July, finished with la  
ready for a garden next y  
three weeks later.

A REAL GARDEN ON THE  
EMBARRASS RIVER



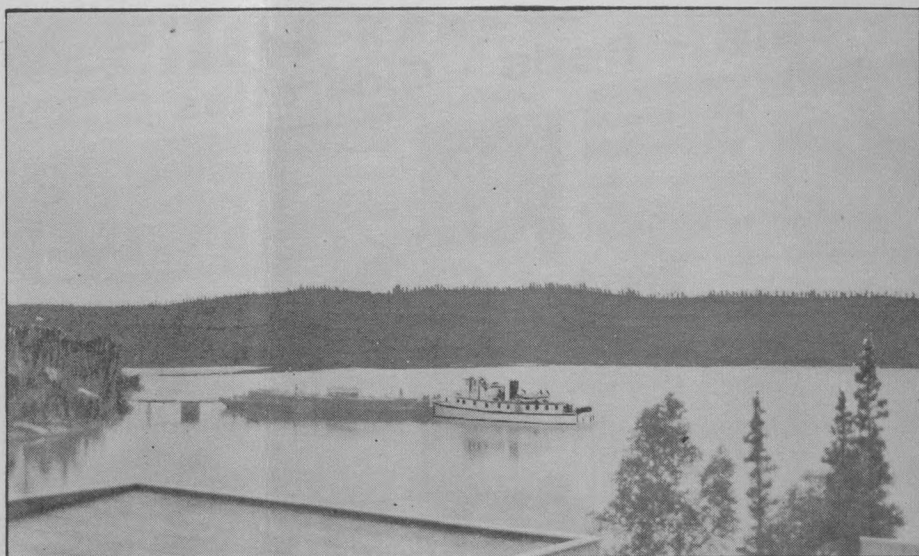
Caught before breakfast  
They grace the table aft  
having gone through the o  
deal of a camp stove. Good  
You bet . . . .

WATERWAYS' BOATS  
 and still more boats deliver  
 light at Yellowknife.

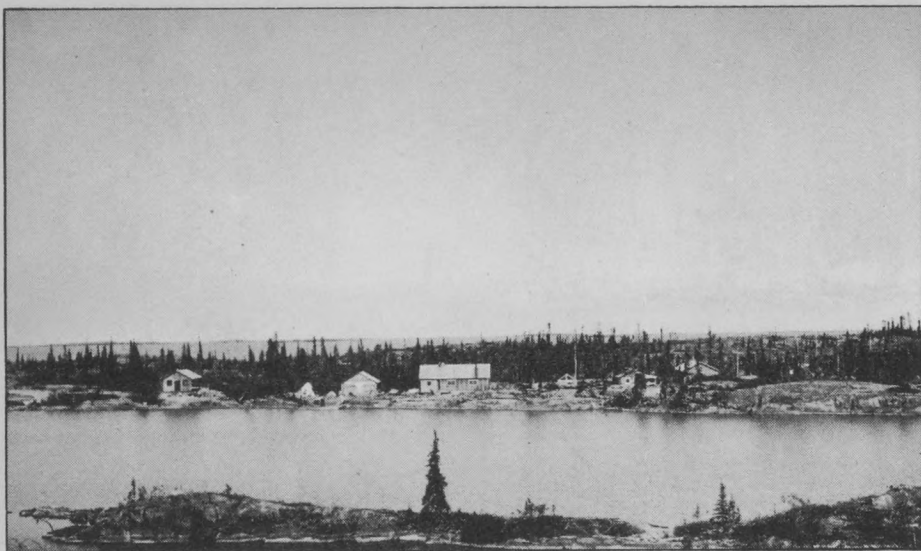


NORTHERN PROSPECTOR  
 at  
 YELLOWKNIFE

A LOAD OF OIL  
 From Fort Norman.  
 —Radium King and Barge





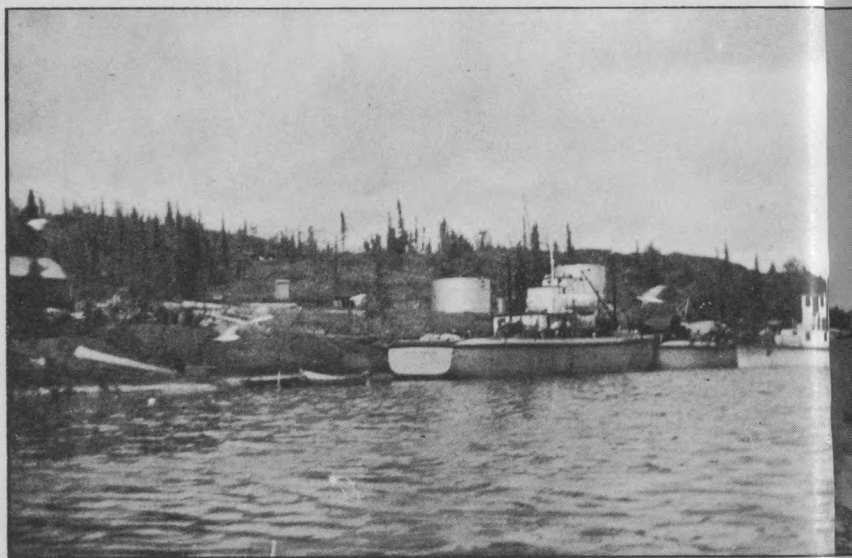


# OUTPOST ISLAND

Closed down at present. stated it will be re-opened next spring. Has \$375,000 worth of gold ore ready for treatment.

## BUSY WATERFRONT

At the Cori where thousands of tons of freight are handled.



## CORONA INN

Yellowknife's first hotel. Left to right: George S. Gory, Mrs. Racine, Prop., W. Graham, and Tom Jorgensen.

ND  
PORT SMITH WATER-  
FRONT

nt.  
-op  
6,00  
atr  
busy loading and flying  
se for down the River.



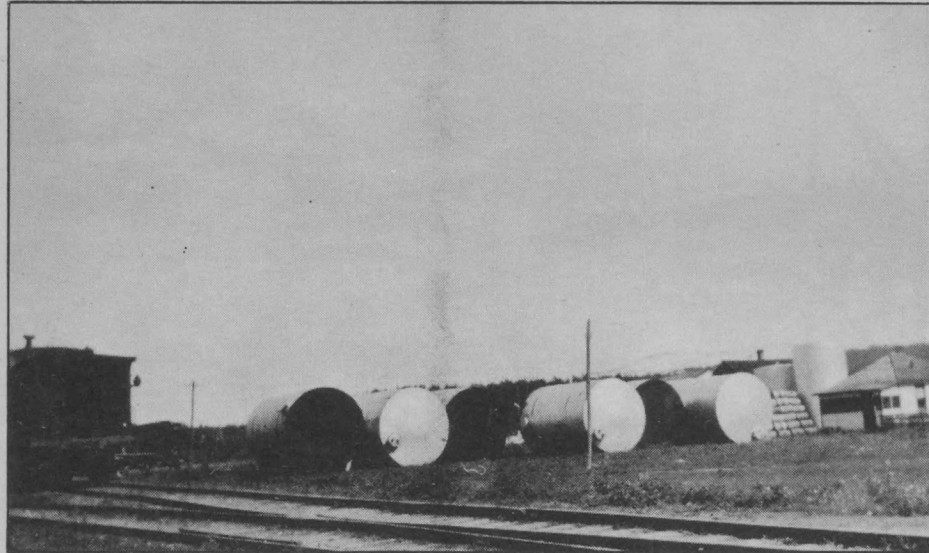
THE NEW ROAD AT  
SMITH

The old one slid into the river  
last year.

WATERWAYS BRANCH  
HAYWARD LUMBER CO.  
S LTD., of Edmonton  
P here full stocks of lumber  
h await shipment to North.







OIL TANKS FOR N  
NORTHERN MINES  
AT WATERWAYS  
ALBERTA

# ERECTING TANKS AT THE NEGUS

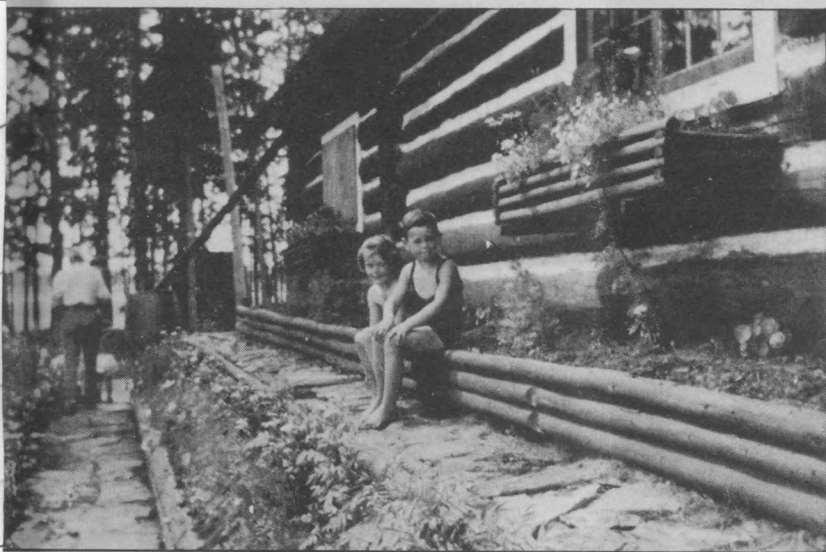
K. H. Adams' crew from Cal-  
gary put them together.



"CATERPILLAR" No. M  
At work clearing at Nght  
Mines.  
kn  
Y

# ORE NORTH IS GOOD TO NES YOUTH

YS  
evy of young Northerners  
he Buffalo Park on the  
Slave River.



## A SLAVE RIVER GARDEN

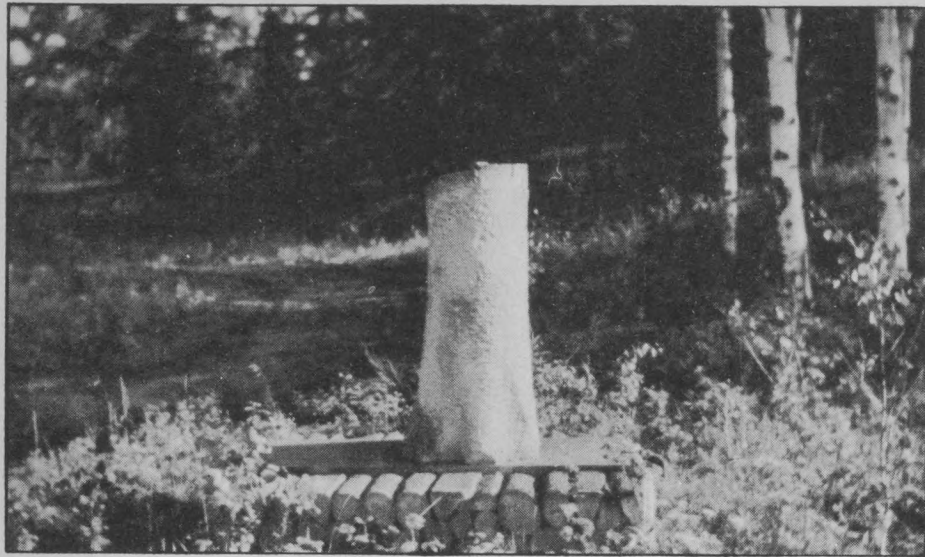
C. Cooper's garden at the  
Buffalo Camp. He even  
grows Strawberries.

## No. MISS CASSIDY

Ngther of Tom Cassidy,  
known prospector. The  
Yellowknife baby.







# THE MONUMENT SMITH

To the most honest wood  
ter of the north.

## COME TO THE COOK HOUSE DOOR BOYS

A welcome sound to all.



## AT THE CROSSROADS ON THE NEGUS

Here lies one of the Jones'  
Boys. Where'er you be let  
your wind go free—

For the want of a tool  
the death of me.  
It's a carpenter's Tool

EN BROTHER "BRUIN"  
 T A ed the mining Cache he  
 le a clean job of it.  
 woo Bear Cache robbed by  
 rs.



#### THE CULPRIT

He climbed tree to right,  
 went astraddle along the pole  
 and did his stuff.

en the canoe was ripped.  
 wound up with a 50 lb.  
 of Klim in his paws. They  
 he was trying to mix it  
 h water in the bay when  
 bullet ended his career.







PROSPECTORS LAND  
AT YELLOWKNIFE

Thousands of these islands a-  
bound in Great Slave Lake—  
Every one has a vein.



Tom Cassidy's place at  
foot of the rapids—Tom  
plenty of mining claims  
is on the way to the first  
lion.

AND  
NIFE



A lady of the north—Ready for winter we are in the good old summer time. She wants to start a school—Kids? There's plenty of them in the Yellowknife. Mostly imported ones, but the others are on the way.



#### OTTO GETS BUSY

Holds real boxing matches every Saturday. All Yellowknife attends.

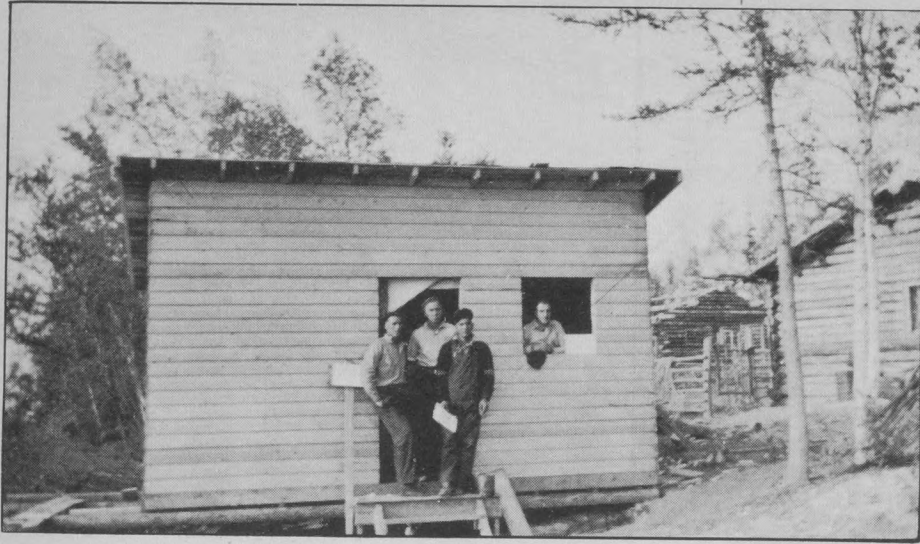
e at  
Tom  
aims  
first



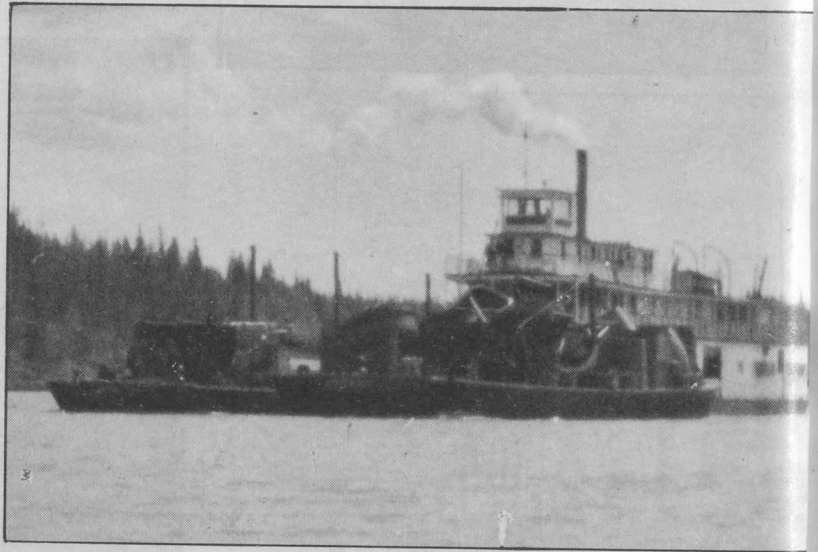
The first Persian White 'Cat in the Yellowknife. Watch it do its stuff when "huskies" are around. It fades gracefully away.



# Shortest Air Route to the Yellowknife



PEACE RIVER AIRWAY  
OFFICE AT  
YELLOWKNIFE



PEACE RIVER AIRWAY  
BASE— YELLOWKNIFE  
Y.T. Pilot Dalziel in  
the foreground.

**LIBERTY MACHINE  
WORKS LTD.**

Equipment to handle any work  
**Sam Nichols, Manager**  
10247 103rd Street,  
Edmonton Alberta

**A. C. BARNES**

Speed Shorthand and  
Stenography—accurate  
service guaranteed  
719 McLeod Bldg. Edmonton  
Phone  
Office 21313 — Res. 32514

**RAILS**

**C. S. Sutherland, Ltd.,**  
Edmonton  
Evans, Coleman & Evans,  
Vancouver, B.C.

**BRONZE, SEMI-STEEL and  
ALLOY CASTINGS**

Machine and Blacksmith Work  
Best of Service and Workmanship  
**Norwood Foundry Co. Ltd.**  
9111 111 Ave. Ph. 71742

**TEA AND COFFEE**

**Bakewell Tea & Coffee Co.**  
Ideal for Northern use. Ask for  
Bakewell Coffee  
10237 109th Street Phone 24998

**MINING STOCKS**

**GREAT BEAR LAKE, YEL-  
LOWKNIFE, GOLDFIELDS  
and Others**

Handled through the facili-  
ties of our private leased  
wires leading to all important  
exchanges.

**GILLESPIE GRAIN  
CO. LIMITED**

McLeod Bldg., Edmonton

**W. T. COTTLE  
GUNSMITH**

10250 101st Street  
Repairs to all makes of Guns  
Gun Parts and Rifle Sights

**MAPS**

Up to date and complete Yellow-  
knife, Goldfields, Gordon Lake,  
Great Bear and Great Slave.  
Surveys, Drafting, Engineer  
Reports

**C. B. ATKINS**

Surveyor and Engineer  
510 Agency Bldg. Edmonton

For Blue Printing, Drafting,  
Engineer's Supplies

**TURNER DRAFTING CO.**  
McLeod Building

Ph. 21561 Edmonton, Alta.

**FOR TANNING . . . .**

Ship your fur and hides to  
**EDMONTON TANNERY**  
9272 110a Avenue EDMONTON  
(Best Work and Service)

**SAW MILL MACHINERY**

Emergency Mining Repairs  
**NICHOLS BROS.**  
Machinists, Brass and Iron  
Founders  
10103 95th St. Edmonton, Alta.

**BARBER, BEAUTY and  
Billiard Supplies**

Smallware and Smoker  
Supplies  
**ALBERTA SUPPLY CO.**  
(Wholesale)

7 Richardson Bldg.  
Edmonton

**DENTISTRY**

**DR. L. R. DODDS**

Visiting McMurray and  
Smith during month  
of May

Write for Appointment  
408 McLeod Bldg.  
Phone 26757  
Edmonton, Alberta

**BUILDING MATERIAL  
OF ALL KINDS**

Lumber, Sash, Doors, Glass,  
Ten Test Board, Core Boxes,  
Scow Planking

**PRICES RIGHT**

**W. H. CLARK**

**LUMBER CO. LTD.**  
109th Street EDMONTON

**E. A. BUTLER AND COMPANY**

**WHOLESALE MEATS AND REFRIGERATOR TRANSPORTATION  
TO YELLOWKNIFE, N.W.T.**

Supplying the New North With Perishable Products.

(BRANCHES AT FORT SMITH, N.W.T., AND  
FORT VERMILION, ALBERTA)

**BUILDING MATERIALS**

We Can Make Prompt Shipments of All Kinds

**LUMBER, SASH, DOORS, PAPER, ROOFING, ETC.**

Packed So As To Arrive At Destination Without Damage

Immediate Reply to All Enquiries

**Armitage-McBain Lumber Co., Ltd.**

Corner 93rd Street and Jasper Avenue

Edmonton



## CORONA INN A YELLOWKNIFE LANDMARK

The first hotel in a new mining field invariably gains an enviable reputation amongst the "boys" for being the place where all can meet, swap news of the field and get real comfort after months in the bush until the time comes to beat it once again to the new spots.

The Corona was the first hotel, located in the growing town of Yellowknife. At first placed on the nearby island, it has since been moved to the new commercial area, where it occupies a central position next to the Mining Corporation dock and the Canadian Airways base. New additions have been made to it by its owner, Peter Racine, and it now has every possible comfort a mining camp hotel can acquire.

It runs a good table and all who have been there once generally go again. Pete, the proprietor, knows his business. He has pioneered in many a mining camp and is always on hand to extend a real bush welcome to all visitors.

**McDermids  
DRAW  
MAPS**  
**ILLUSTRATE FOLDERS  
AND MAKE  
PHOTO-ENGRAVINGS  
FOR EVERY  
PRINTING PURPOSE**



**McDermid Studios Ltd.**

**10024 - 101st STREET**  
*Near the Journal ~ EDMONTON*

## EDMONTON'S LUMBER HEADQUARTERS

When Building Materials are needed in a hurry send your orders to HAYWARD'S, at either Edmonton or Waterways.

Large stocks carried at Waterways, including, scow material, shingles, fir flooring, doors, windows, paper, prepared roofing, Donnacona and Gyproc wallboards, cement, bricks, builders' hardware, blacksmith coal, etc.

Our Facilities in Waterways enable us to give the North the Direct Service they need.

**REMEMBER — Reliable Prices and Quality Goods  
is our Policy and your Guarantee.**

**HAYWARD LUMBER CO.**  
**LIMITED**

EDMONTON

ALBERTA

## **FLOCKING TO THE YELLOWKNIFE**

From all over Canada people are flocking into the Yellowknife, many, no doubt, doomed to disappointment; others to snatch the prizes that go with any new mining camp. The townsite has now been surveyed and is fast being taken up by newcomers. The system of squatting is followed, namely, any open lot is available for location with the proviso that a building must be erected, the lot cleared and used for residence purposes. There has been a little dealing in lots, several having already changed hands, in one case \$3,000 was paid; in another around \$1,300.

### **School Required**

Within a few months, the number of children living in the Yellowknife area will justify the establishment of a school. It is understood that the Dominion government is arranging for this.

### **Representation a Necessity**

The one thing required in the North and to which the mining population is entitled to is representation at Ottawa in the House of Commons. The absurd situation, where a large body of people have no more political rights than treaty Indians, is one that must be changed. There are many questions daily arising which no council at Ottawa can settle to the satisfaction of the residents and in any case the North West Territories is part and parcel of the Dominion of Canada and there should be no question of citizenship being limited.

## **MAKES HUGE SHIPMEST**

Burns Limited, it is stated, are making a shipment of 500,000 pounds of meat, butter, eggs and other perishable provisions to the new cold storage plant recently erected by the Company at Yellowknife. It is stated it will require a whole shipload to take the supplies down river.

The plant installed is well built and

insulated and has a fine refrigerator plant of 10-ton capacity. It is designed to carry sufficient supplies of meats and provisions over the winter season of the North.

## **GRIMSHAW - SLAVE LAKE ROAD FEASIBLE**

Information gathered from people along the route and also as a result of a recent inspection trip over the proposed winter route, emphasizes the fact that there are good winter trails, capable of use for "cat" transportation from Grimshaw to Upper Hay River. From there very little cutting is required to make the trail passable to the lake. There is a regular Indian route through the country going via Swan and Buffalo Lakes to the mouth of the Hay, which is constantly in use during the winter months. Ed. Demelt, of Yellowknife, when seen concerning a trip he made some years ago from Upper Hay to the Lake with a team and a three-ton load on sleighs, states that the scrub poplar and spruce encountered was easily passed over and no obstructions to amount to anything outside of a few coulees near the Caribou mountains were encountered.

## **FOLLOWING THE LEADER**

The leader in any mining camp has always been the prospector. He finds a surface proposition and others follow him with the drill. The public generally await the development of one or more mines before it also gets interested. Far-seeing ones, willing to take a speculative chance, try to get in before the rest of the public. Yellowknife is in that stage at the present time. Hundreds of prospectors are combing the field, which is of huge extent. Almost every important mining company is on the ground and thousands are being spent. The speculating public are not yet interested to any large extent, simply because it has been fashionable in eastern areas to have a gold "rush" almost every season. Experienced review of the Yellowknife field justify the assertion that it is in a different class to such.



**Prospectors and Trappers  
Down North!**

We Manufacture and Specialize for  
Your Needs.

Tents — Tarpaulins — Dog Harness,  
Packsacks, Dunnage Bags, etc.  
Pack Saddles and Leatherwork

**PRICES RIGHT**

And Guarantee Them to Stand the Wear

**WELSH'S**

10315-101st Street

Edmonton

Phone 22721

**PROSPECTORS SUPPLIES AT  
REASONABLE PRICES**

Write or Wire

**Kushners Store**

**YELLOWKNIFE, N.W.T.**

Also at McMurray, Alberta

(Oldest established free traders in the  
North)

**VOGUE  
ICE CREAM**

**SPECIALLY MADE AND  
PACKED FOR  
NORTH COUNTRY TRADE**

---

**Vogue Ice Cream Co.**

10059 101 Street  
**EDMONTON**

**E. G. JONES**

**GENERAL MERCHANT**

Specializing in supplies for

**Prospectors, Traders, Trappers**  
also complete list of S. S. Holden  
Limited Outdoor Clothing—  
Parkas, Tents, Tarpaulins, Pack-  
sacks, Polar sleeping robes, in-  
cluding the famous 4 in 1.

**YELLOWKNIFE, N.W.T.**

---

Outside enquiries for full outfits  
solicited

**Corona Inn**

**Yellowknife, N.W.T.**

**GOOD ROOMS, MEALS AND OTHER ACCOMODATION**  
**A HOME FOR ALL WHILST VISITING YELLOWKNIFE**  
**AT MODERATE PRICES**

Pete Racine, Proprietor.

## Fishing Good In Alberta

Reports from the Fisheries Service Dept. of the Government of Alberta, state that as a whole, it may be related that fishing due to high water conditions has delayed many anglers from fishing so far. From a conservation point of view it has been ideal, lots of water and no loss of fish throughout the Province is recorded.

Pincher Creek and Districts Including Waterton River, Castle River and Tributaries—Due to high water, fishing up until the middle of June was poor, although bait fishing for Dolly Varden continued good throughout the season, Fly fishing is now engaged in and reports indicate very good fishing for Cutthroat, Rainbow and Dolly Varden.

Waterton Lakes — Excellent lake trout of splendid size are caught in the main lake, in fact a specimen of over 20 pounds was recently caught by a Lethbridge sportsman. Fishing for Rainbow in Cameron and Crypt Lakes continues fair. The most successful fly used is the Silver Doctor.

Willow Creek and Old Man River—Waters have been too high for anything like good fishing, but with lower levels prevailing it is hoped better fishing will prevail. The creels caught in this district have been mainly Montana Grayling so far.

Highwood—The most famous fishing stream in Alberta has been so exceptionally high that fishing except around the town of High River has been poor. A few steelheads were caught in and around the town of High River. Generally speaking, however, with the exception of Pekisko and Sullivan Creeks, tributaries of the Highwood, fishing has been considerably poorer than in former years.

The Bow, and Elbow—Most of the trout from the Bow are of the Rainbow variety, a three and a half pound was caught in the spillway at Glenmore recently, and a 6 pound Nipigon opposite the Country Club. Fishing in and around Calgary has been exceptionally good within the last week, and at Kananaskis Lake, due to the

stocking within recent years, of Rainbow, the catch has been exceptional.

Didsbury and West on the Raven and Red Deer Rivers—Some of the finest angling reported this year is to be found on these streams, Loch Leven up to 7 pounds have been caught, and particularly excellent Speckled Trout on the Tay and Clearwater Rivers is reported.

Edmonton West to Jasper Park—Where reports indicate that better fishing has never been obtainable than what has been prevalent this year at Maligne, Beaver and Medicine Lakes.

Cold Lake—Fishing the first part of the year was poor, but results of the last week indicate better fishing.

Lesser Slave Lake—Prairie Creek and the Marten River show good Grayling fishing, but the fish due to low water conditions are not of the usual large size prevailing.

Tourist Trade—Information points to a banner year, and enquiries still continue to trickle in. Peculiarly enough quite a number of the enquiries insist on information regarding fishing in the Lesser Slave Lake area.

### LOCATES AT FRANCOIS RIVER

Stated to be well located and near Consolidated stakings on Francois River, 18 claims have been staked by George Lathom and R. Macdonald, of Yellowknife. They consist of the Wire Group of 12 claims and the O. A. F. Group of six claims, located 68 miles east of Yellowknife with three of the claims tied to Consolidated properties there. Grab samples, it is stated, show visible gold. Mineralization in nearly every case showed Galena and Areseno Pyrite with numerous quartz veins. It is also stated that a Grayson Dyke is situated on the property.



## BEAR HUNTING DE LUXE

Silence—complete silence—the silence of the wild lands of the North, of the Pacific and the west coast reigned when the “put, put” of the engine of the halibut boat, eager to get away from the foaming breakers on the west coast of the Queen Charlottes, edged its nose into Rennell Sound, a haven of joy to fishermen on the west coast of the Queen Charlottes.

At last the head of the inlet was reached, and with a sigh of relief, “Ole threw the anchor overboard”. He looked around and there on the beach was a father bear, a mother bear, and still more bears, who all quit eating skunk cabbage and looked with awe on this thing of the seas. Ole yells “Jan there’s a bear on the beach”. “Well what of it”, answers Jan. “How get him with only No. 4 shot and a gun.” But Ole was not to be gainsaid. He replied, “You put the boat down we’ll get the bear and have our choice too, young or old”. Down goes the dory, in jumps Ole and Jan, Ole taking an axe as well as the No. 4 shot gun. They row towards the beach and Ole says, “As we get to the shore you keep the boat afloat ready to pull to sea, and I will go ashore and shoot up the bear. He will get mad having No. 4 tickle his hide and so will chase me to the water, we get him in the water and use the axe on Mr. Bear, and so have bear steak tonight”. “Uh” says Jan, “Sounds good, you are trying it, go to it.” As the boat scraped the beach Ole jumps ashore and winds his way up to the bear, Jan stays in the boat, safe at any rate, he thinks from crazy Ole. Ole looks at the bear, the bear looks at Ole. Foot after foot the distance lessens, untill less than fifteen feet separates Ole from the bear. Then Ole ups with the gun and lets fly with both barrels, direct at the head of the bear. He does not wait, but turns tail and makes two man sized jumps for the boat and safety. “Pull”, he cries to Jan as he leaps aboard, but to his dismay, Jan was not only not pulling, but was sunk down in the boat laughing his head off. Ole cast a hasty glimpse over his shoulder expecting Pa Bear to cuff him one good, but what was his surprise when

he saw the bear beating it for all he was worth due west from the boat shaking the No. 4 shot out of his beard and snorting disapproval of the whole affair.

Ole went one way the bear went the other, so another good bearsteak did not grace the forecastle stove that night.

## HOLDS MANY PROPERTIES

Amongst others holding ground in Yellowknife area is Eddie Jones, well known old-timer in the North. For some 13 years Jones was connected with the Hudson’s Bay Company and Northern Traders in the North. He at present holds 18 claims in the Hidden Lake district, the scene of one of the latest gold strikes in the Yellowknife. He has a store at Yellowknife and carries a complete stock of miners’ supplies. He also specializes in obtaining selected prime furs of exceptional quality for anyone requiring the same. His address is Yellowknife, N.W.T.

## OUTPOST ISLAND

Outpost Island is now a city of the “dead” even poor old Oswald the eagle picked up his wings and flew the coop—Oswald was a pet eagle and a landmark on Outpost for several seasons. Caught young, he became acquainted with all the miners through his playful habit of lighting on their heads and snatching off their hats, then flying to the top of the shaft head and squawking his joy. However, they do say Outpost Island, after being “timmined” is to come back in the spring. They have, it is said \$375,000 worth of ore to be treated. Perhaps Oswald will also return.

Latest advice is that Outpost Island is to be opened next Spring.

## READ THE NOR’ WEST MINER

By it You Know the North—

Support it and it will run again  
next Spring—

\$2.00 a Year.

# The Yellowknife, Great Slave Lake and the Lower Mackenzie River

Shipping Freight into the North is the Business of

**Ryan Bros.**

Operating

A COMPLETE FREIGHTING AND PASSENGER SERVICE OVER  
THE SMITH PORTAGE

For Rates and Other Particulars Address

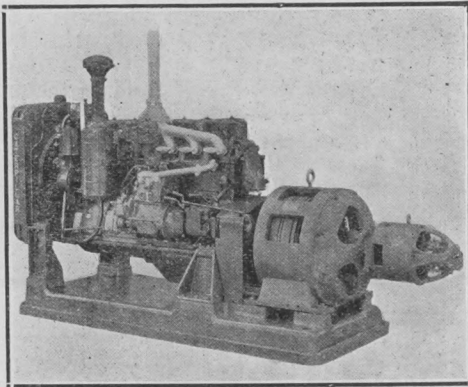
## **RYAN BROS.**

114 - 115 ADAMS BUILDING, EDMONTON, ALBERTA

FORT SMITH, N.W.T.

CANADA

## GENERAL ELECTRIC POWER for the MINE WITH "CATERPILLAR" DIESEL ELECTRIC GENERATOR SETS



Mine operators frequently generate their own electric power for certain mine operations with a "Caterpillar" Diesel generator set at a fraction of what it costs to furnish electric power. One mine owner reports an average saving of .8c per KWH; another generates current at a fuel cost below 1c per KWH. That's low-cost electric power.

And this typical "Caterpillar" Diesel low-cost of operation plus dependability and stamina to stay on the job is what has made "Caterpillar" Diesel generator sets preferred equipment for mine power.

See us for complete information on low-cost power with a "Caterpillar" Diesel electric generator set.

### SIZE OF GENERATORS

D 17000 . . . KW 80 — D 13000 . . . KW 60  
D 8800 . . . KW 40 — D 6600 . . . KW 30  
D 4400 . . . KW 30

ALBERTA DISTRIBUTORS

## **UNION TRACTOR & HARVESTER Co., Ltd.**

CALGARY

10626 101st STREET, EDMONTON

LETHBRIDGE



## GOLDFIELDS

The major development by the Consolidated of the Box property at Goldfields, it is stated, has been temporarily modified, the reason being engineering difficulties encountered on the two million hydro development which is to serve the 1,000-ton mill now almost constructed.

The difficulty, it is stated, is due to an unexpected flow of quicksand in the tunnel between the power plant and the mine, also to the development of large cavities in the same area. Pending overcoming of this trouble, more work is being done on underground development and less on mill construction.

This information is not official, but is fairly well known amongst those interested in the Goldfields area.

## BOREALIS COMPANY LTD. TRANSFERS CLAIMS

Forming a new company known as the Sentinel Mines Ltd. the Borealis Co. has transferred a group of 110 claims situate in the Murray Bay, Yellowknife area to the new company. Officers and directors are F. K. Morrow, president, W. M. Archibald, vice-president, Maj. Gen. D. M. Hogarth, J. Errinton and F. J. Crawford, Directors. It has a capitalization of 3,000,000 shares, of which one million have been issued for the property. \$100,000 cash has been placed in the treasury and options taken on 1,000,000. The company, it is stated is well financed for development work.

## Chrome-Vanadium TOOLS

for  
MINING  
AVIATION and  
AUTOMOTIVE  
WORK

Highest Quality — Lowest Prices

Hettrick Waterproof  
TENTS — TARPAULINS and  
SUPPLIES for the PROSPECTOR

Wholesale and Retail.

Mail Inquiries Promptly  
Attended to.

MUNRO'S CUT RATE  
HARDWARE AND  
AUTO SUPPLIES LTD.

9908 - 102 Ave., Edmonton, Alta.  
Phone 22573

## Alexander Diamond Drill Co. Ltd.

C.P.R. Bldg., Toronto  
EL. 2289

DRILLS AND CREWS  
IMMEDIATELY AVAILABLE IN  
Amos, Rouyn, Red Lake, Kenora,  
Yellowknife, N.W.T., and anywhere  
else in Canada

1 Cedar St. New York; Dominion  
Square Bldg., Montreal; Empire  
Block, Edmonton

Prospectors, Miners,  
Pioneers of the  
North



THE BEST FOR LESS

WHEN YOU DEAL AT WOODWARD'S

YOUR SATISFACTION IS OUR HIGHEST AIM

*Good Service, First Quality Merchandise at  
Reasonable Prices*

WRITE WOODWARD'S FOR GROCERY PRICE LIST  
EDMONTON, ALBERTA



HE  
CHOSE  
WOODLAND  
BUTTER

●

*"BROTHER BRUIN" KNOWS HIS BUTTER*

Robbing prospectors caches is quite a fashionable bearish sport in the North and many a prospector has returned to find his cabin door broken open and its contents scattered, torn and thrown to the winds by "Brother Bruin". This one, however, shows discrimination, for instead of grabbing the bacon, he is beating it with a Can of Woodland Butter. Perhaps he realizes that the "Little Red Can" not only protects its contents from all kinds of weather and other conditions but is also a hard nut to crack for even a bear. Or perhaps he is taking it away to put in cold storage until after his winter sleep?

Everywhere, one goes in the North, one meets up with Woodland Butter in the familiar RED CAN.

(Copyright Applied For)





*Comptroller*  
*24770*

PROVINCE OF ALBERTA—DEPARTMENT OF AGRICULTURE

## GAME BIRD REGULATIONS, 1938

In the interest of the conservation of the game birds of Alberta the following short synopsis is laid down.

DUCKS—12 per day—36 in possession—100 for season.

GEESE—5 per day—25 for season.

HUNGARIAN PARTRIDGE—10 per day—200 for season, open season only south of the North Saskatchewan River.

**Season for waterfowl starts in the Province on September 15th, North Zone.**

No open season on Pheasants, Chukar Partridge, Ruffed Grouse, Prairie Chicken.

**License Fee for Waterfowl and Game Birds—Resident, \$2.00**

DONT forget to apply for the Game regulations before going out hunting.

DONT forget it is against the law to carry a loaded gun in your car.

DONT forget to obtain permission from the farmer before you hunt over his land.

DONT forget to comply with the regulations, they are for your protection.

DONT forget that the other fellow wants his share of the birds so shoot less than you are allowed.

DONT forget that you have a dangerous weapon in a gun, so see that it is well looked after before you go out hunting.

HON. D. B. MULLEN  
Minister

J. R. SWEENEY  
Deputy Minister

W. H. WALLACE  
Fish and Game Comm.

## ELECTRICITY in the Oil Fields ...

Of great value are the country's resources, but only to the extent that they are economically recoverable; oil fields are no exception.

As the wet gas is withdrawn from the field, the pressure, producing a natural flow of valuable crude oil, gradually diminishes until further recovery must be made by artificial methods. Such recovery, representing over one-half of the potential value of oil, can be continued at low cost by electrical pumping installations.

Thus the development of one Natural Resource—notably in Turner Valley—is assisted by another already developed to a high degree in this Province

# CALGARY POWER COMPANY LIMITED

## "Serving Alberta"







